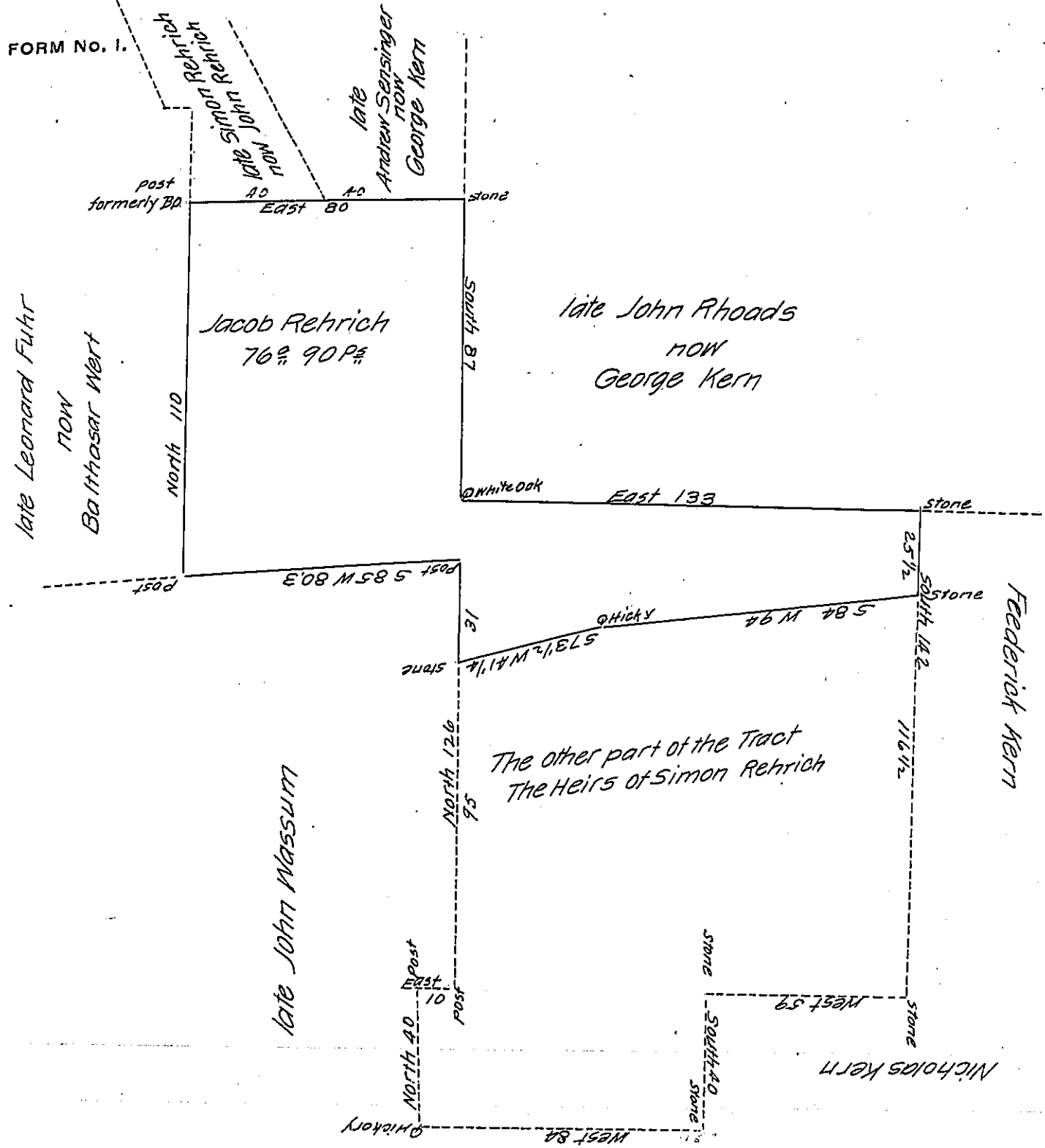


FORM NO. 1.



A Draught of a Tract of Land situate in Heidelberg Township in the County of Lehigh Containing Seventy six Acres ninety perches and Allowance of 6 P Cent &c<sup>9</sup> being part of one hundred and eighty one Acres sixty four perches & Allowance &c<sup>9</sup> originally surveyed to John Rhoads by Warrant dated the 31<sup>st</sup> Day of October 1753. Surveyed for John Rehrich the 16<sup>th</sup> Day of March 1822

Samuel Cochran Esq<sup>r</sup> }  
Surveyor General }

P. Peter Rhoads D.S.

IN TESTIMONY that the above is a copy of the original remaining on file in the Department of Internal Affairs of Pennsylvania, made conformably to an Act of Assembly approved the 16th day of February, 1833, I have hereunto set my Hand and caused the Seal of said Department to be affixed at Harrisburg, this second day of October 1906

*Edward P. Brown*  
Secretary of Internal Affairs.